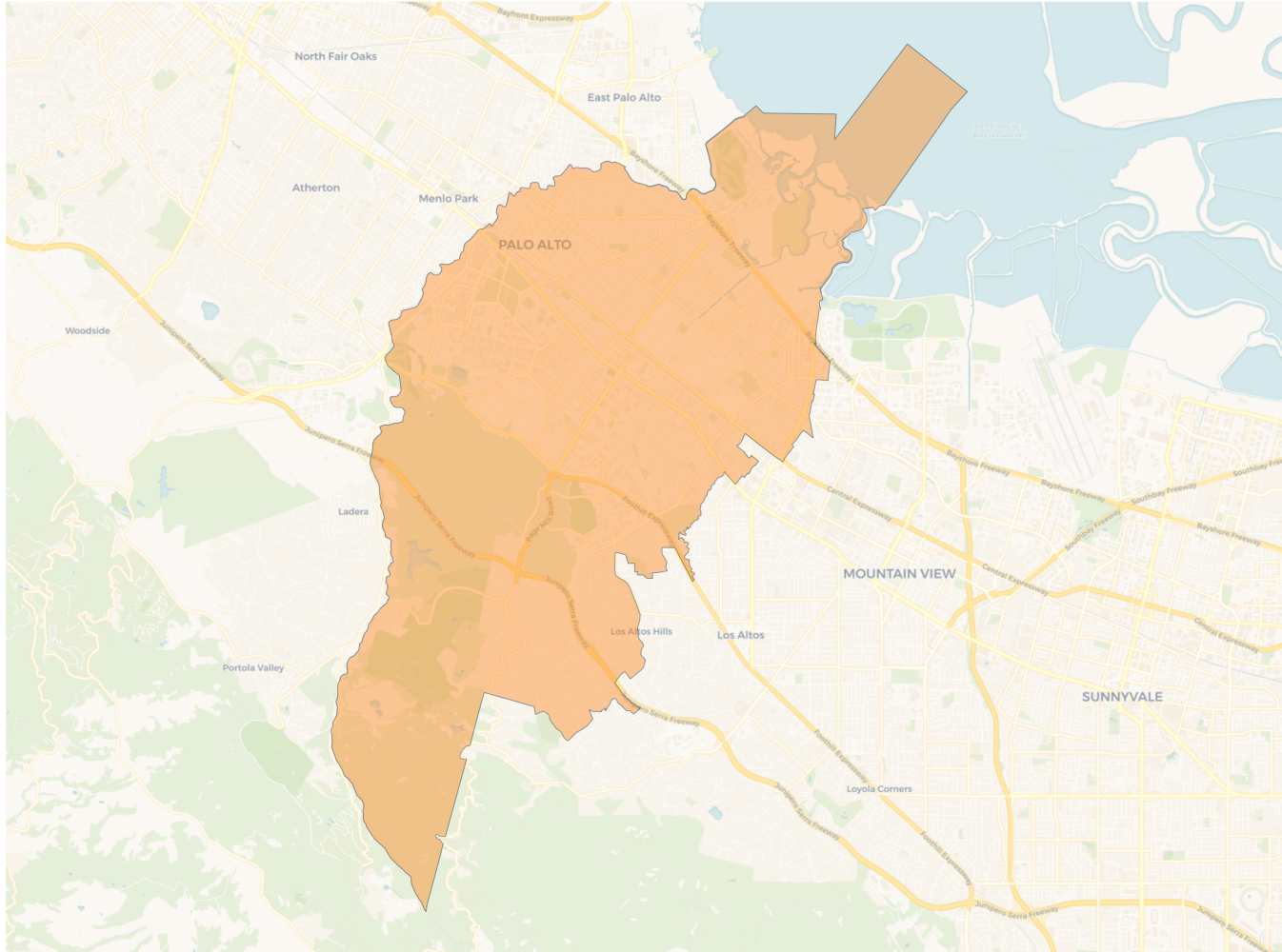
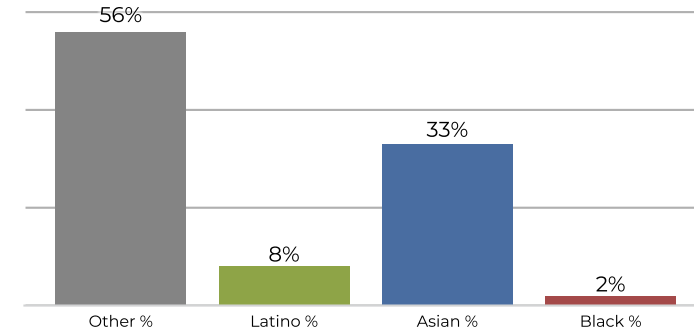
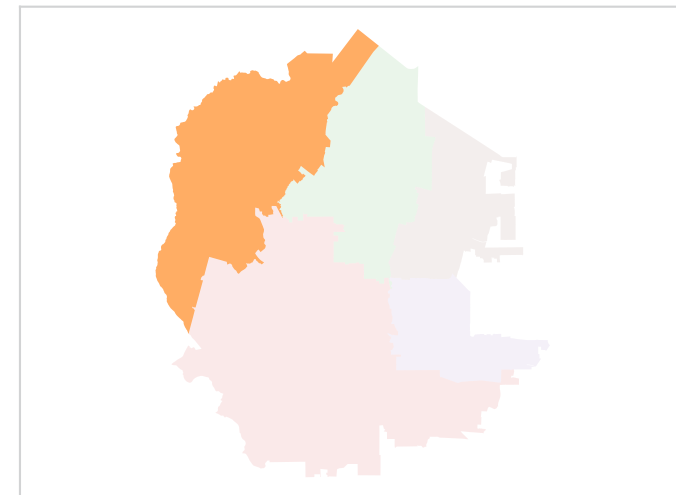
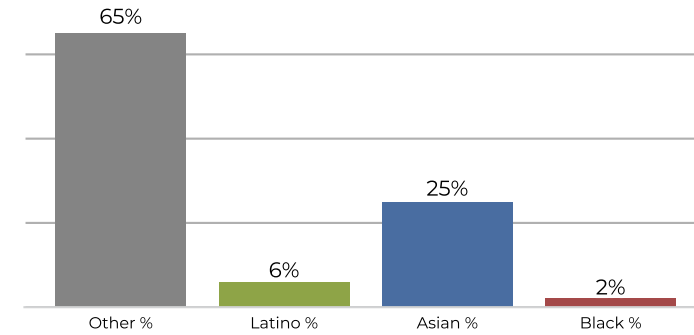


2020 Census

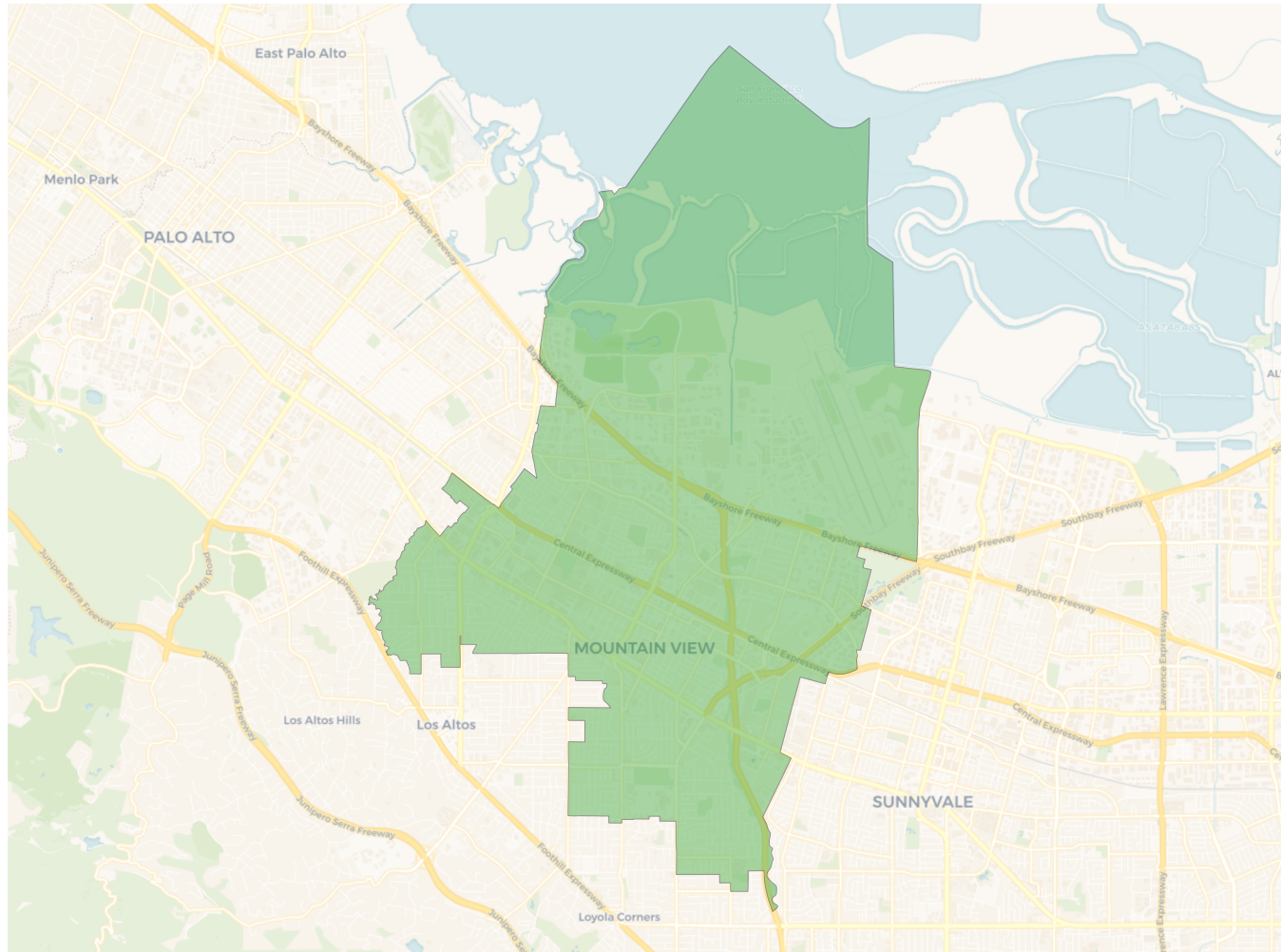
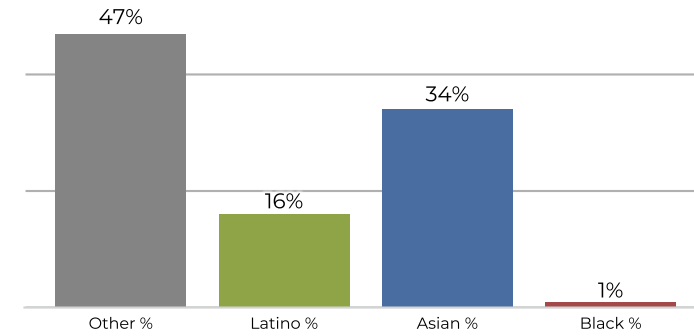
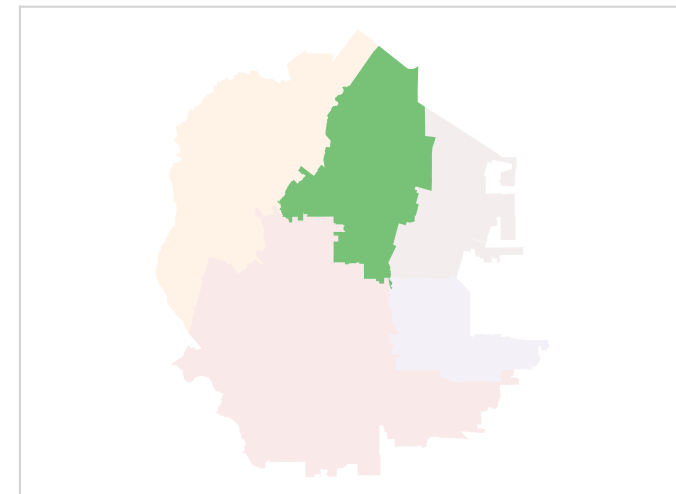
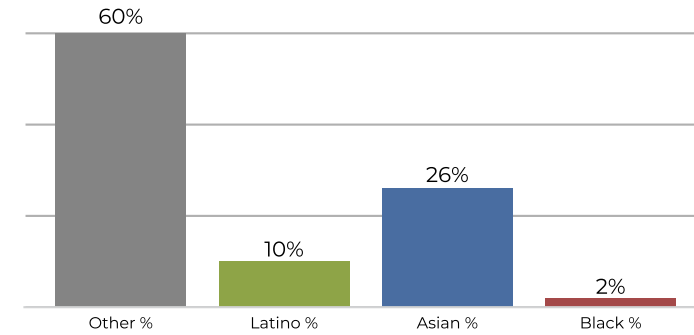
	A	B	C	D	E
Population	92,734	90,571	86,095	92,001	89,852
Deviation	2,483	320	-4,156	1,750	-399
Deviation %	2.8%	0.4%	-4.6%	1.9%	-0.4%
Other	52,160	42,948	34,338	26,809	26,994
Other %	56.2%	47.4%	39.9%	29.1%	30.0%
Latino	7,690	14,833	3,262	6,567	17,696
Latino %	8.3%	16.4%	3.8%	7.1%	19.7%
Asian	30,625	31,476	48,057	57,664	43,798
Asian %	33.0%	34.8%	55.8%	62.7%	48.7%
Black	2,259	1,314	438	961	1,364
Black %	2.4%	1.5%	0.5%	1.0%	1.5%

Citizen Voting Age Population (CVAP)

	A	B	C	D	E
Total CVAP	56,553	50,613	55,547	44,789	43,303
Other CVAP	36,888	30,829	27,386	19,533	20,016
Other CVAP %	65.2%	60.9%	49.3%	43.6%	46.2%
Latino CVAP	3,852	5,338	1,850	2,995	7,840
Latino CVAP %	6.8%	10.5%	3.3%	6.7%	18.1%
Asian CVAP	14,419	13,240	26,027	21,114	14,432
Asian CVAP %	25.5%	26.2%	46.9%	47.1%	33.3%
Black CVAP	1,394	1,206	284	1,147	1,015
Black CVAP %	2.5%	2.4%	0.5%	2.6%	2.3%

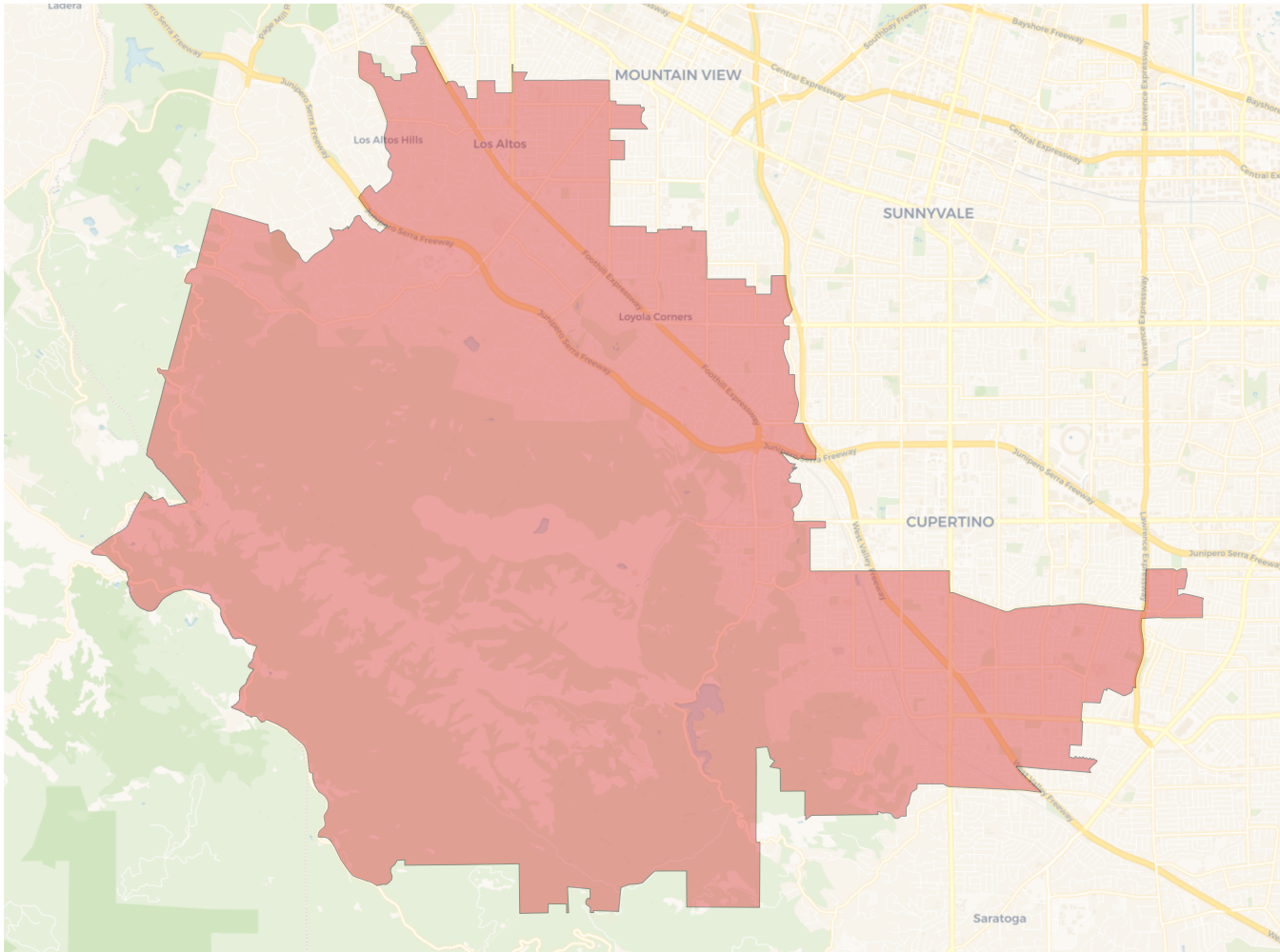
District A

2020 Census

Citizen Voting Age Population


Population	Deviation	Deviation %	Other	Other %	Latino	Latino %	Asian	Asian %	Black	Black %
92,734	2,483	2.8%	52,160	56.2%	7,690	8.3%	30,625	33.0%	2,259	2.4%
Total CVAP	Other CVAP	Other CVAP %	Latino CVAP	Latino CVAP %	Asian CVAP	Asian CVAP %	Black CVAP	Black CVAP %		
56,553	36,888	65.2%	3,852	6.8%	14,419	25.5%	1,394	2.5%		

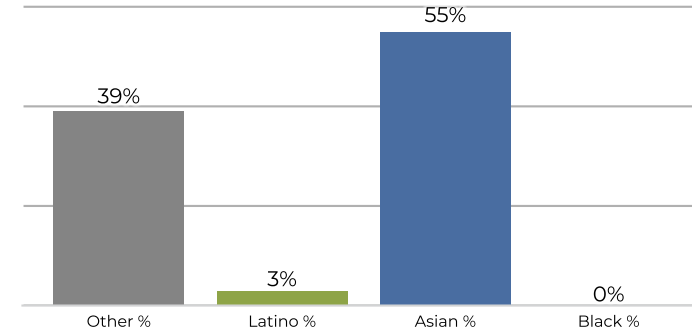
District B

2020 Census

Citizen Voting Age Population


Population	Deviation	Deviation %	Other	Other %	Latino	Latino %	Asian	Asian %	Black	Black %
90,571	320	0.4%	42,948	47.4%	14,833	16.4%	31,476	34.8%	1,314	1.5%
Total CVAP	Other CVAP	Other CVAP %	Latino CVAP	Latino CVAP %	Asian CVAP	Asian CVAP %	Black CVAP	Black CVAP %		
50,613	30,829	60.9%	5,338	10.5%	13,240	26.2%	1,206	2.4%		

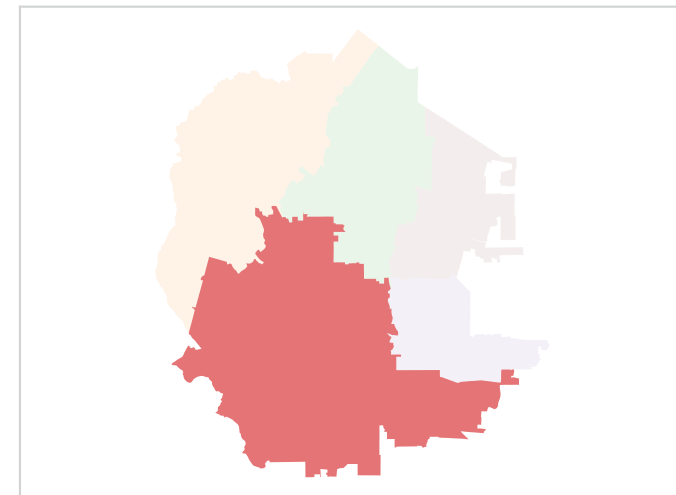
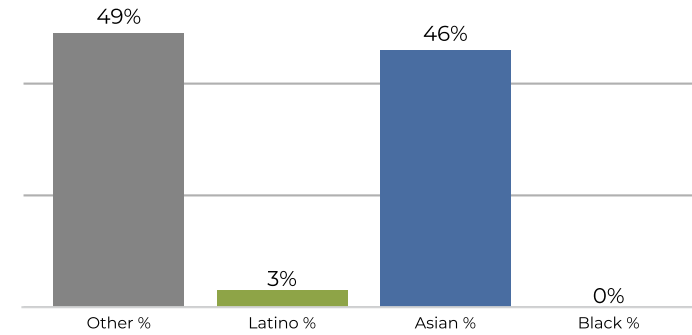
District C



2020 Census

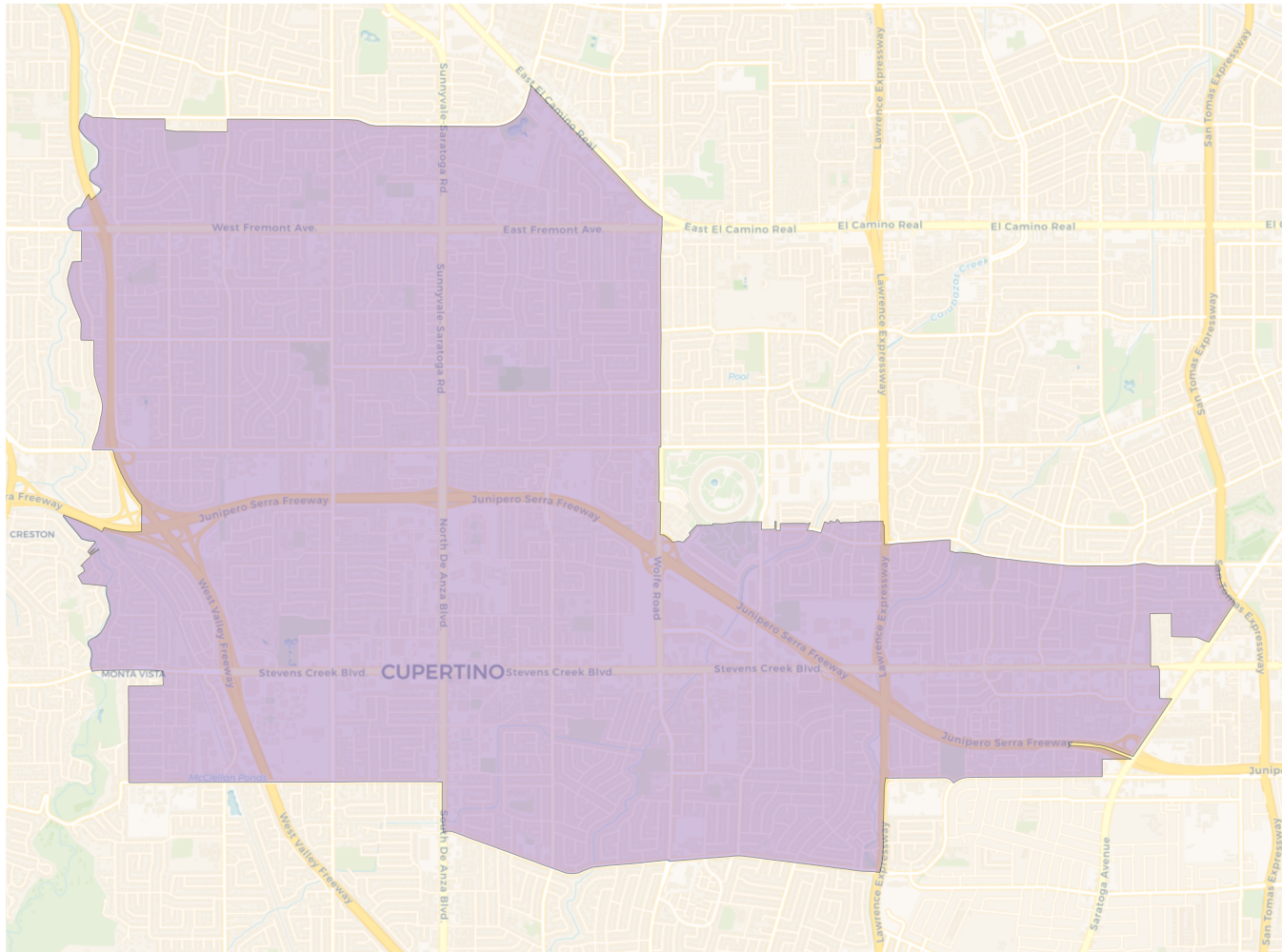


Citizen Voting Age Population

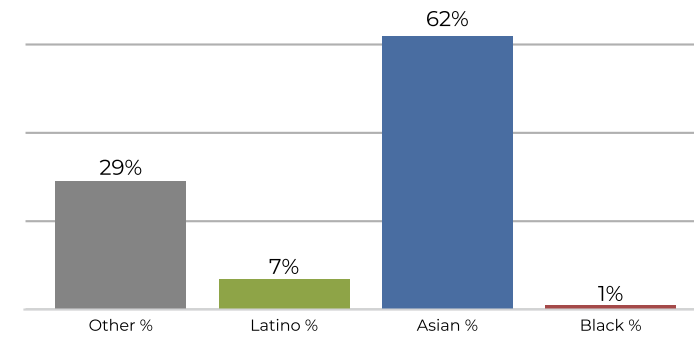


Population	Deviation	Deviation %	Other	Other %	Latino	Latino %	Asian	Asian %	Black	Black %
86,095	-4,156	-4.6%	34,338	39.9%	3,262	3.8%	48,057	55.8%	438	0.5%
Total CVAP	Other CVAP	Other CVAP %	Latino CVAP	Latino CVAP %	Asian CVAP	Asian CVAP %	Black CVAP	Black CVAP %		
55,547	27,386	49.3%	1,850	3.3%	26,027	46.9%	284	0.5%		

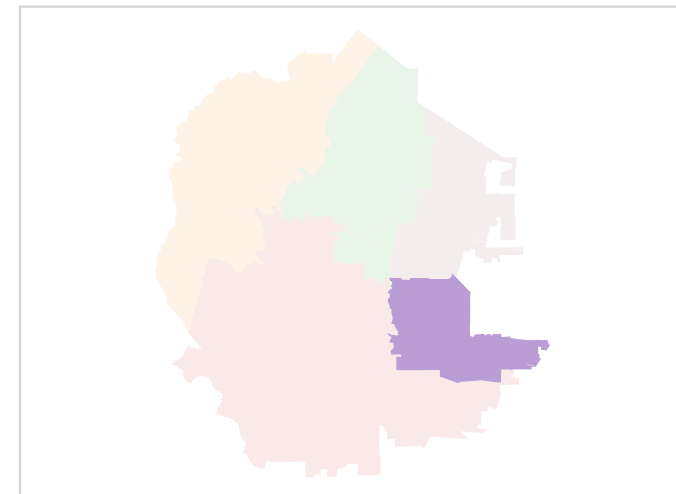
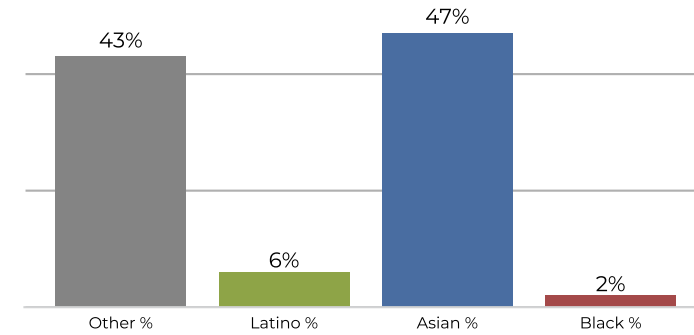
District D



2020 Census

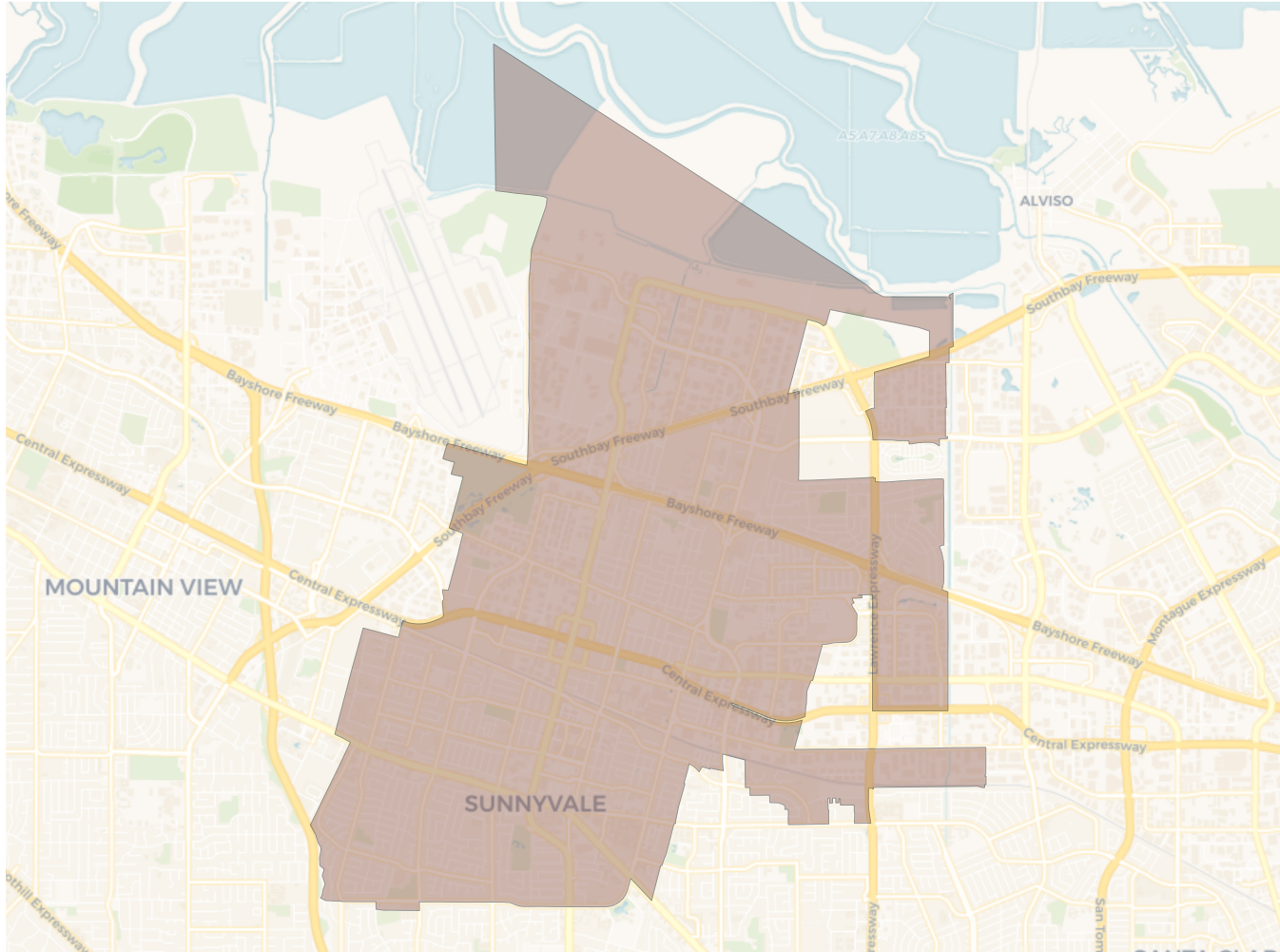


Citizen Voting Age Population

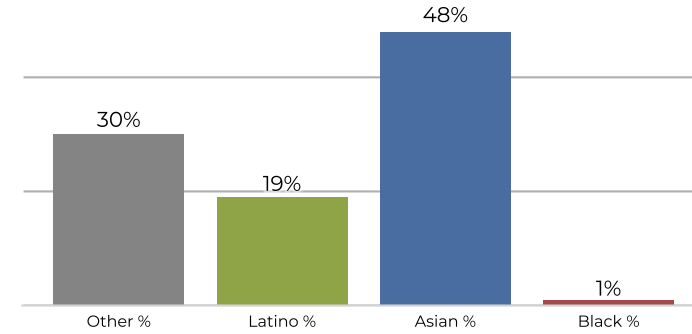


Population	Deviation	Deviation %	Other	Other %	Latino	Latino %	Asian	Asian %	Black	Black %
92,001	1,750	1.9%	26,809	29.1%	6,567	7.1%	57,664	62.7%	961	1.0%
Total CVAP	Other CVAP	Other CVAP %	Latino CVAP	Latino CVAP %	Asian CVAP	Asian CVAP %	Black CVAP	Black CVAP %		
44,789	19,533	43.6%	2,995	6.7%	21,114	47.1%	1,147	2.6%		

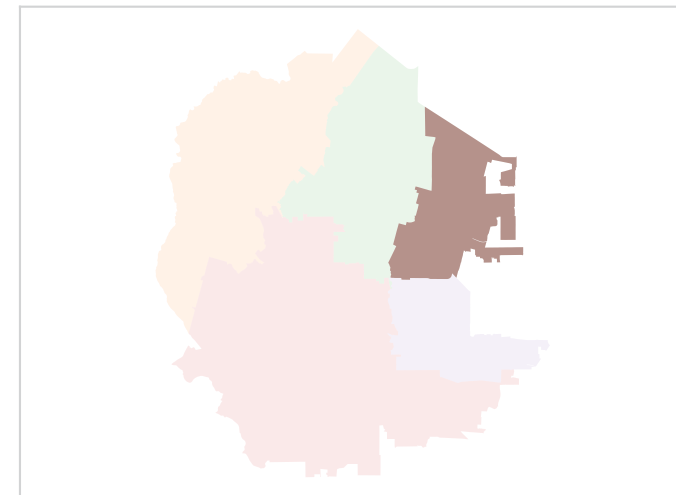
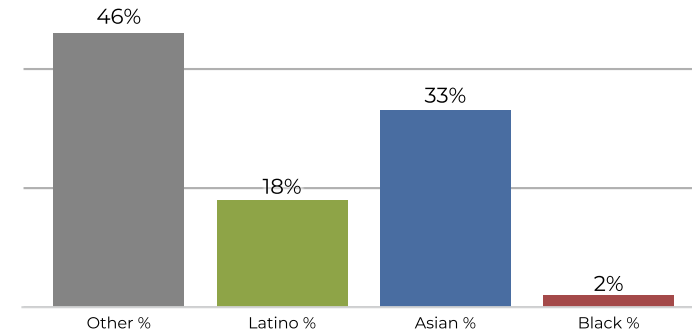
District E



2020 Census



Citizen Voting Age Population



Population	Deviation	Deviation %	Other	Other %	Latino	Latino %	Asian	Asian %	Black	Black %
89,852	-399	-0.4%	26,994	30.0%	17,696	19.7%	43,798	48.7%	1,364	1.5%
Total CVAP	Other CVAP	Other CVAP %	Latino CVAP	Latino CVAP %	Asian CVAP	Asian CVAP %	Black CVAP	Black CVAP %		
43,303	20,016	46.2%	7,840	18.1%	14,432	33.3%	1,015	2.3%		