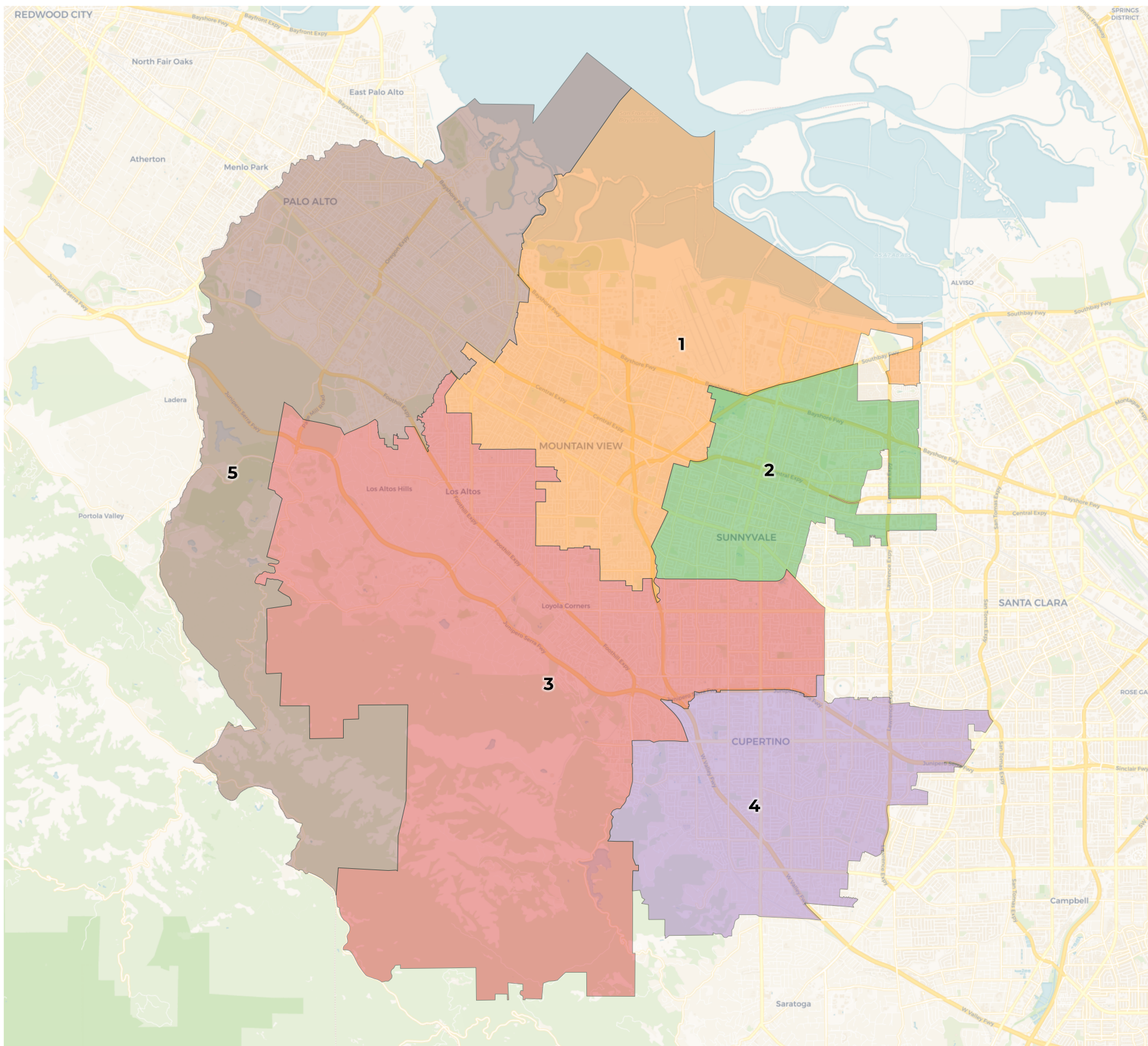


REDISTRICTING PARTNERS

Foothill De Anza CCD Final Plan 2022

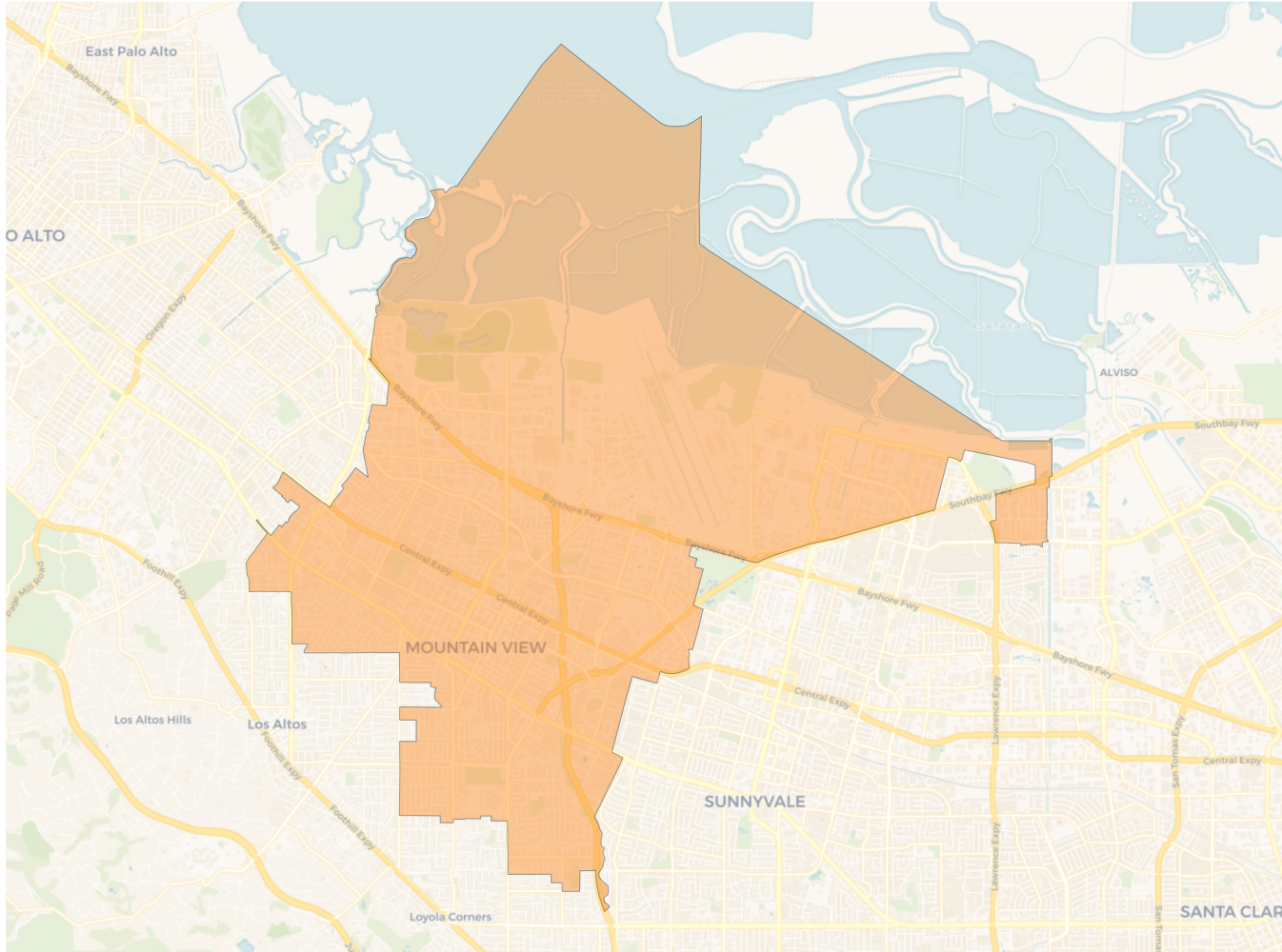
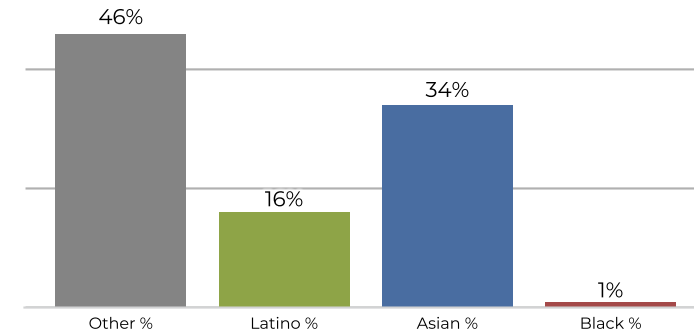
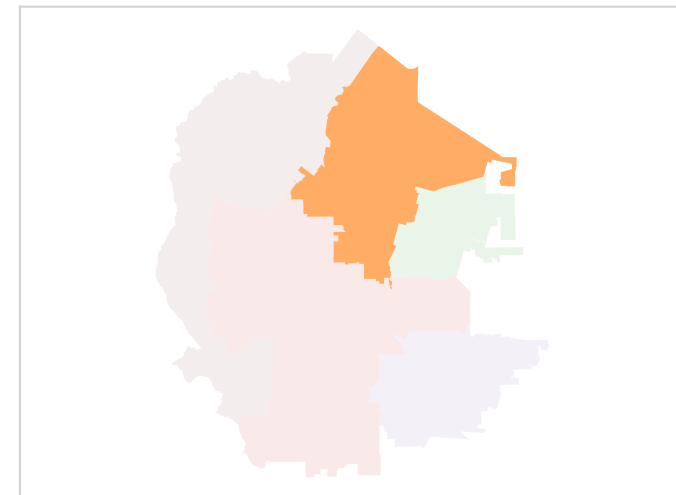
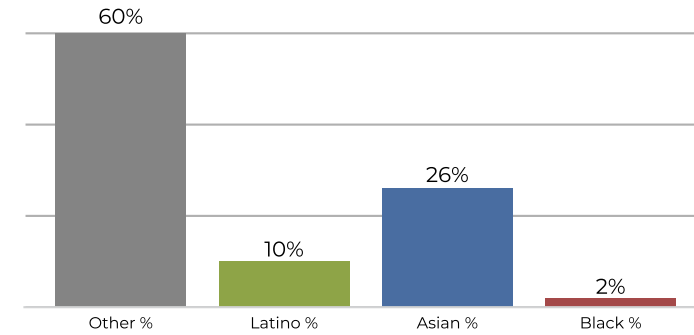


2020 Census

	1	2	3	4	5
Population	87,776	89,322	90,180	93,994	89,981
Deviation	-2,475	-929	-71	3,743	-270
Deviation %	-2.7%	-1.0%	-0.1%	4.1%	-0.3%
Other	41,122	26,876	42,881	21,702	50,668
Other %	46.8%	30.1%	47.6%	23.1%	56.3%
Latino	14,726	17,645	5,567	4,511	7,599
Latino %	16.8%	19.8%	6.2%	4.8%	8.4%
Asian	30,636	43,437	40,993	67,095	29,459
Asian %	34.9%	48.6%	45.5%	71.4%	32.7%
Black	1,292	1,364	739	686	2,255
Black %	1.5%	1.5%	0.8%	0.7%	2.5%

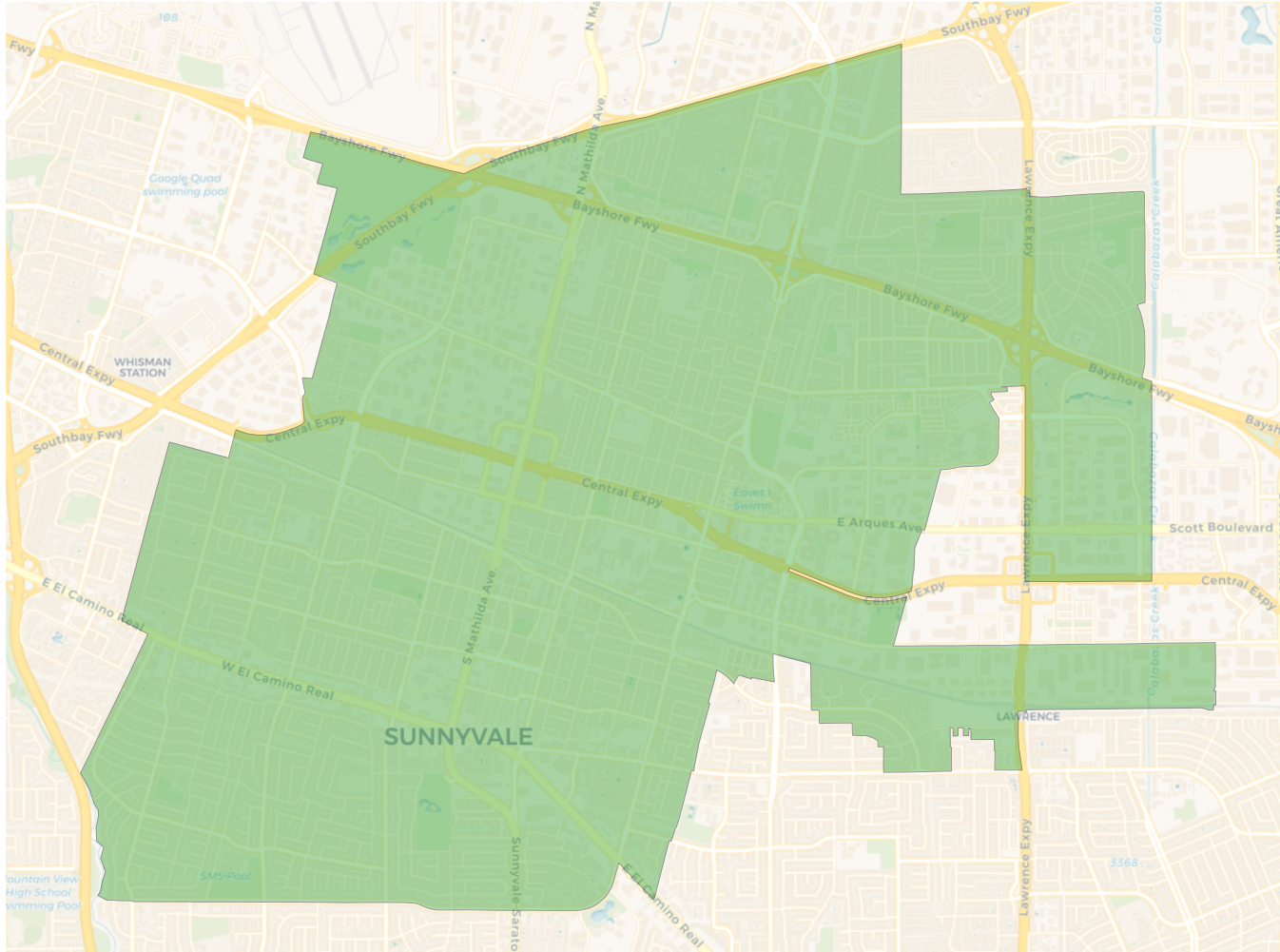
Citizen Voting Age Population (CVAP)

	1	2	3	4	5
Total CVAP	48,985	43,113	52,448	51,620	54,639
Other CVAP	29,603	19,894	31,284	18,135	35,736
Other CVAP %	60.4%	46.1%	59.6%	35.1%	65.4%
Latino CVAP	5,319	7,820	2,581	2,320	3,835
Latino CVAP %	10.9%	18.1%	4.9%	4.5%	7.0%
Asian CVAP	12,867	14,384	18,001	30,294	13,686
Asian CVAP %	26.3%	33.4%	34.3%	58.7%	25.0%
Black CVAP	1,196	1,015	582	871	1,382
Black CVAP %	2.4%	2.4%	1.1%	1.7%	2.5%

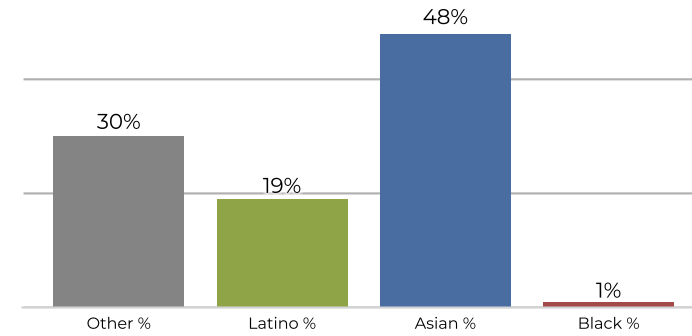
District 1

2020 Census

Citizen Voting Age Population


Population	Deviation	Deviation %	Other	Other %	Latino	Latino %	Asian	Asian %	Black	Black %
87,776	-2,475	-2.7%	41,122	46.8%	14,726	16.8%	30,636	34.9%	1,292	1.5%
Total CVAP	Other CVAP	Other CVAP %	Latino CVAP	Latino CVAP %	Asian CVAP	Asian CVAP %	Black CVAP	Black CVAP %		
48,985	29,603	60.4%	5,319	10.9%	12,867	26.3%	1,196	2.4%		

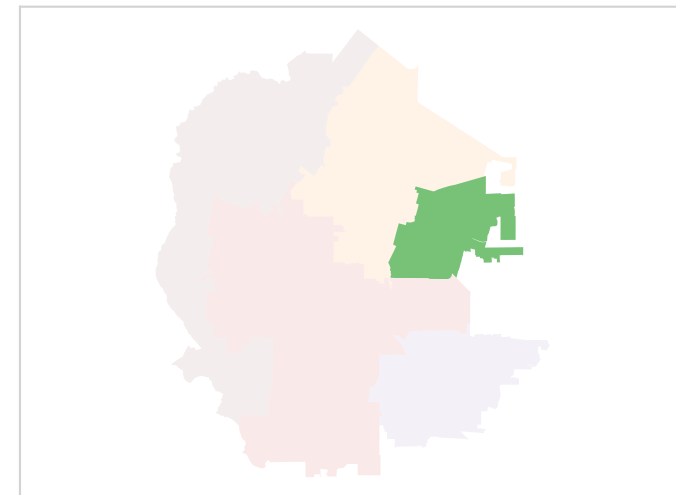
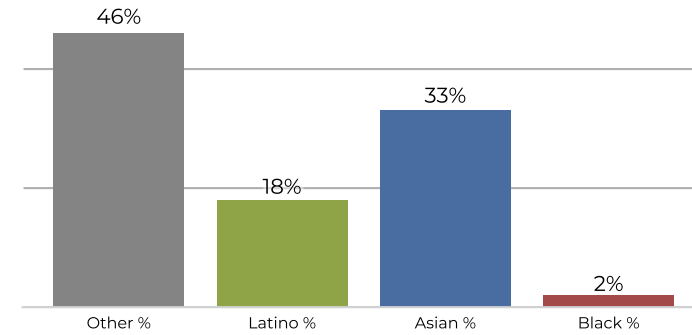
District 2



2020 Census

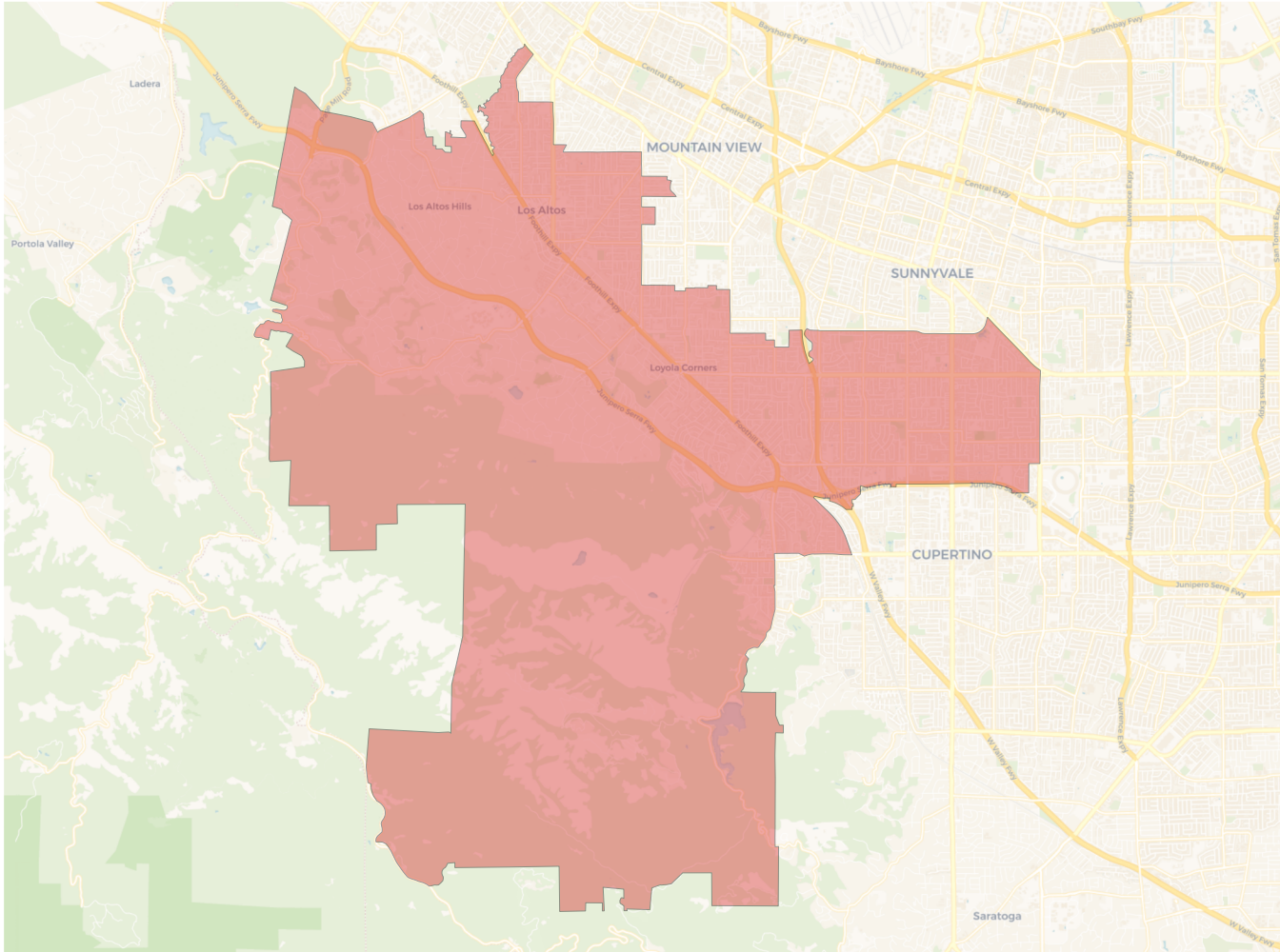


Citizen Voting Age Population

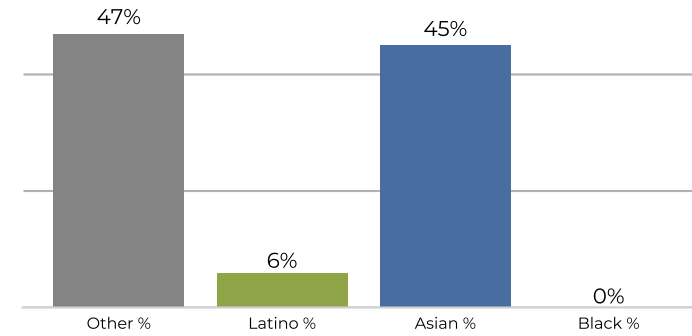


Population	Deviation	Deviation %	Other	Other %	Latino	Latino %	Asian	Asian %	Black	Black %
89,322	-929	-1.0%	26,876	30.1%	17,645	19.8%	43,437	48.6%	1,364	1.5%
Total CVAP	Other CVAP	Other CVAP %	Latino CVAP	Latino CVAP %	Asian CVAP	Asian CVAP %	Black CVAP	Black CVAP %		
43,113	19,894	46.1%	7,820	18.1%	14,384	33.4%	1,015	2.4%		

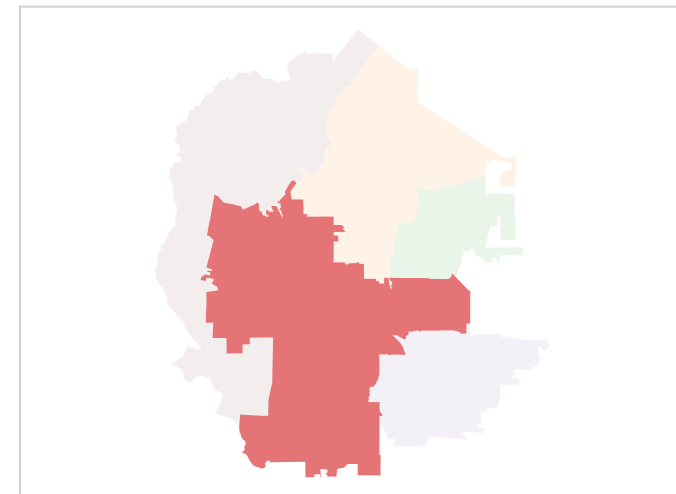
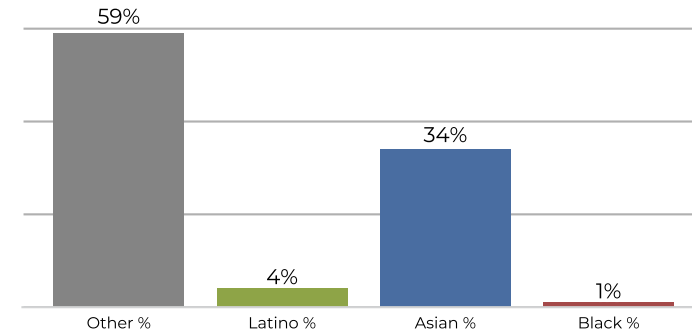
District 3



2020 Census

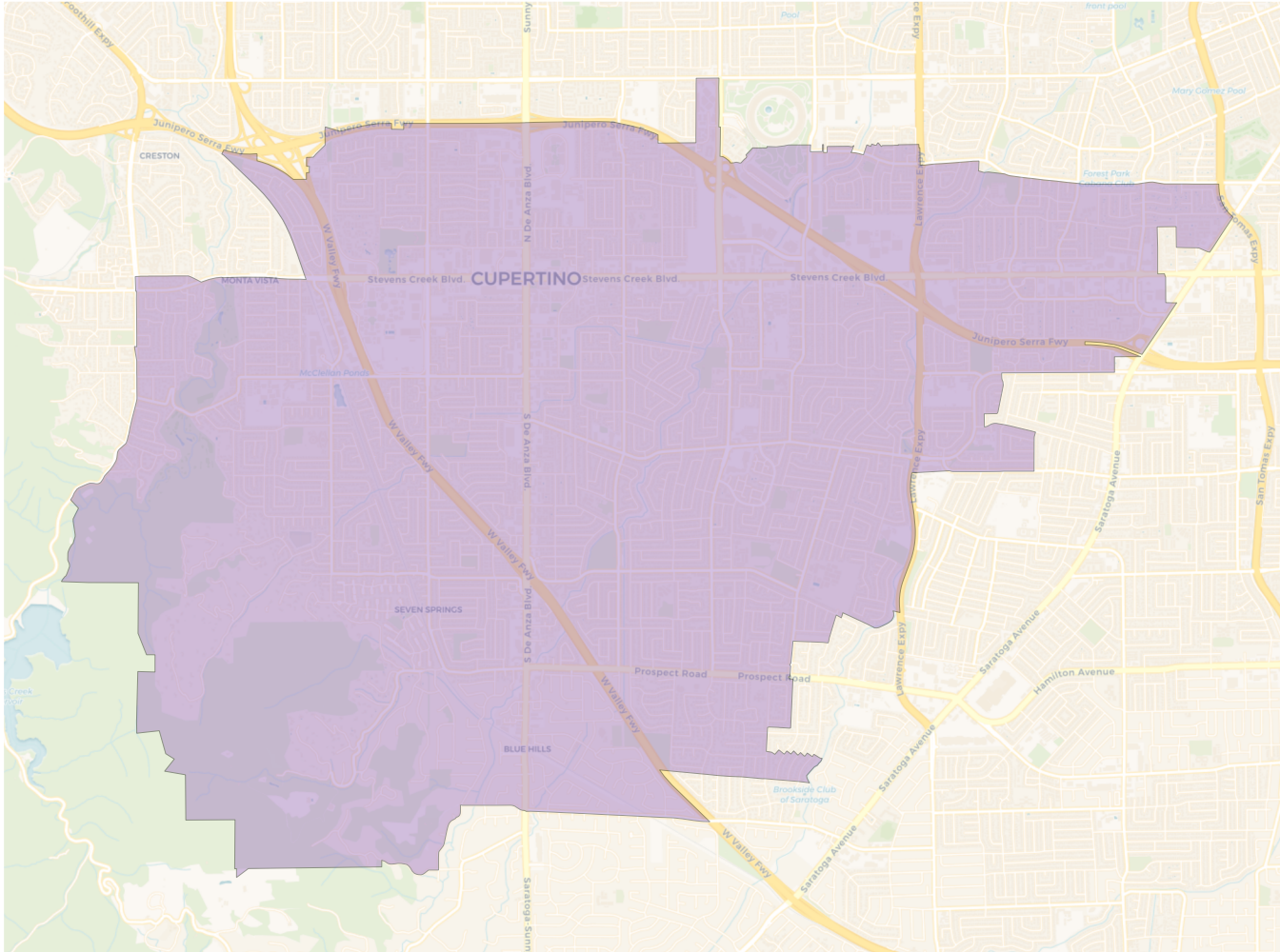


Citizen Voting Age Population

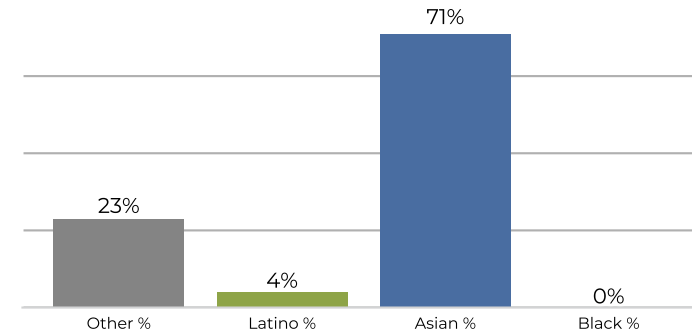


Population	Deviation	Deviation %	Other	Other %	Latino	Latino %	Asian	Asian %	Black	Black %
90,180	-71	-0.1%	42,881	47.6%	5,567	6.2%	40,993	45.5%	739	0.8%
Total CVAP	Other CVAP	Other CVAP %	Latino CVAP	Latino CVAP %	Asian CVAP	Asian CVAP %	Black CVAP	Black CVAP %		
52,448	31,284	59.6%	2,581	4.9%	18,001	34.3%	582	1.1%		

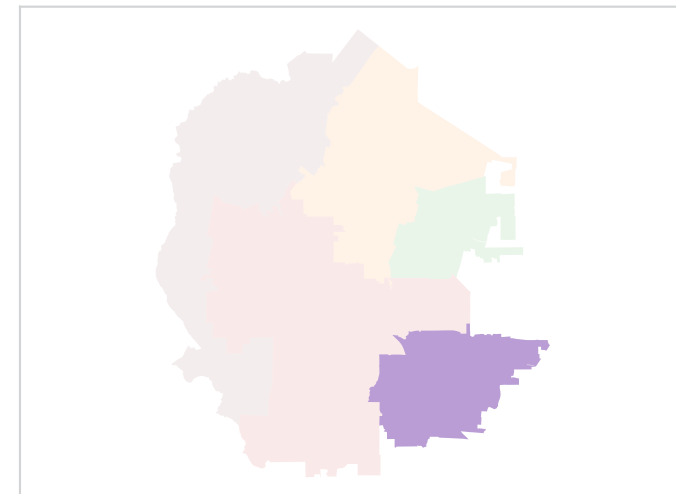
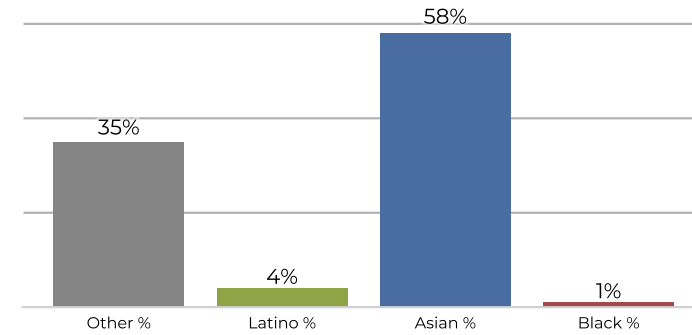
District 4



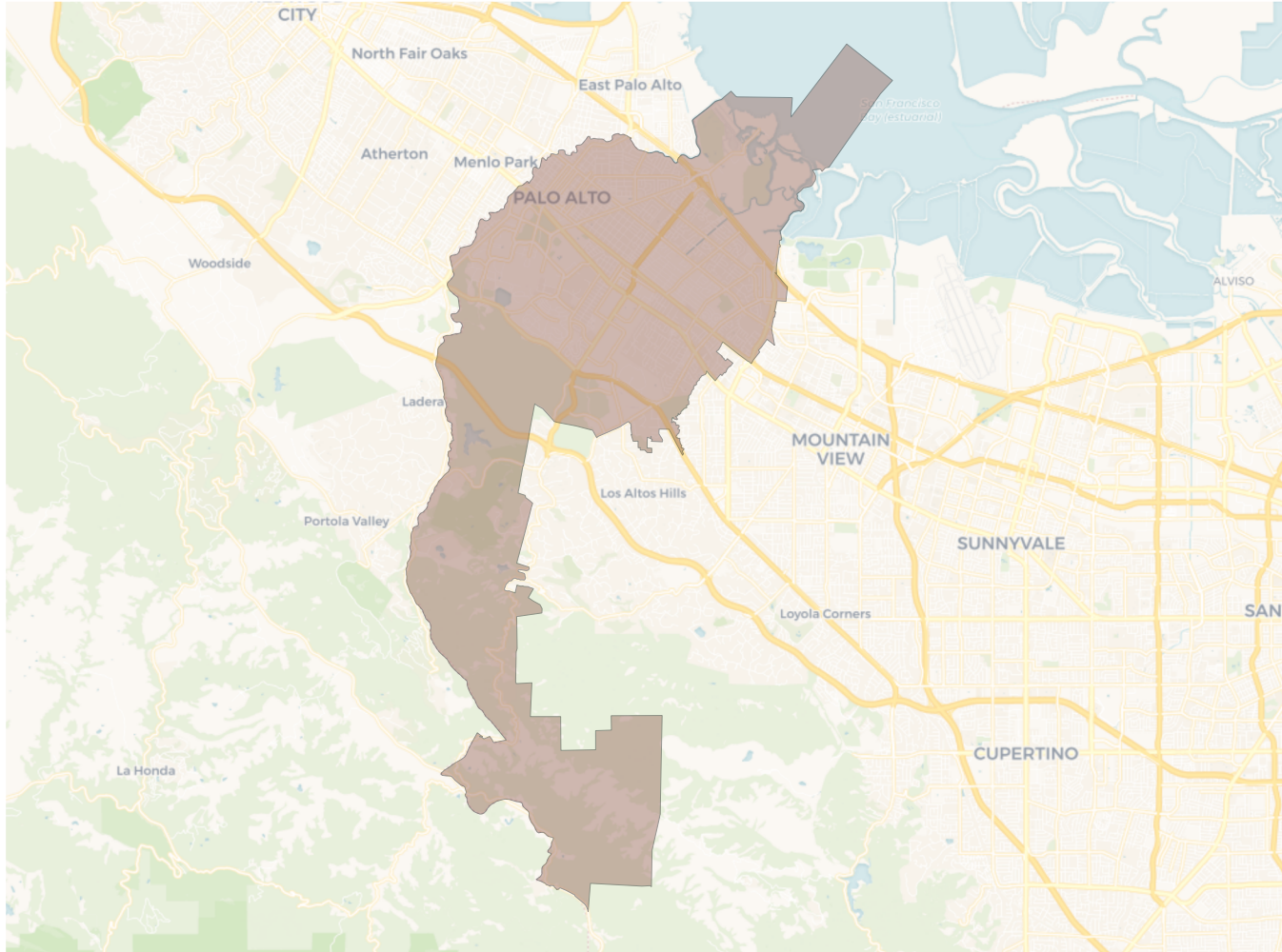
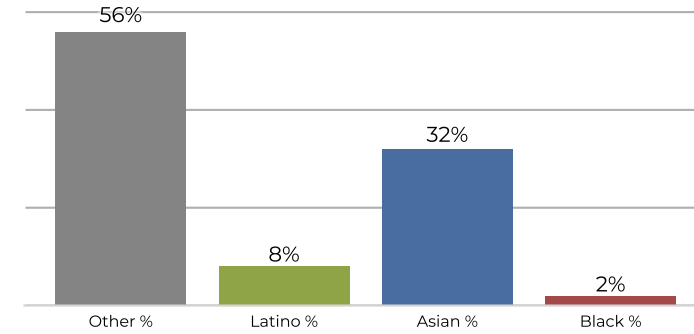
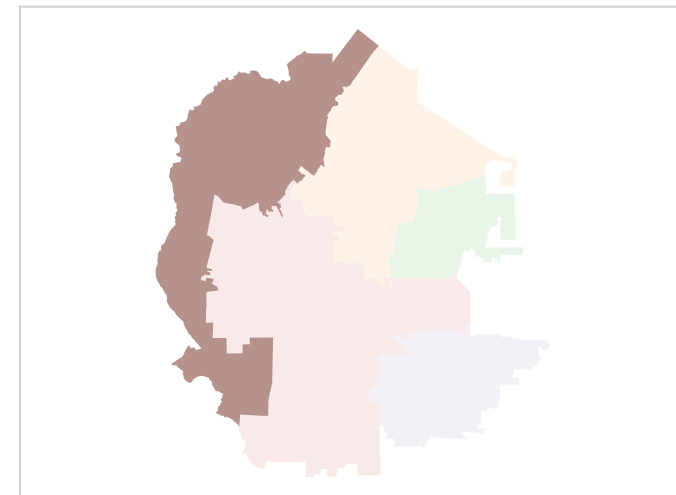
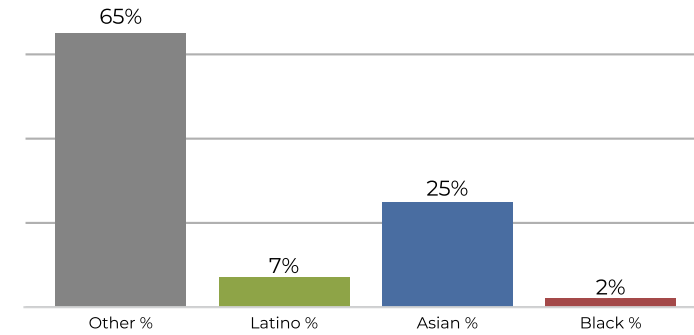
2020 Census



Citizen Voting Age Population



Population	Deviation	Deviation %	Other	Other %	Latino	Latino %	Asian	Asian %	Black	Black %
93,994	3,743	4.1%	21,702	23.1%	4,511	4.8%	67,095	71.4%	686	0.7%
Total CVAP	Other CVAP	Other CVAP %	Latino CVAP	Latino CVAP %	Asian CVAP	Asian CVAP %	Black CVAP	Black CVAP %		
51,620	18,135	35.1%	2,320	4.5%	30,294	58.7%	871	1.7%		

District 5

2020 Census

Citizen Voting Age Population


Population	Deviation	Deviation %	Other	Other %	Latino	Latino %	Asian	Asian %	Black	Black %
89,981	-270	-0.3%	50,668	56.3%	7,599	8.4%	29,459	32.7%	2,255	2.5%
Total CVAP	Other CVAP	Other CVAP %	Latino CVAP	Latino CVAP %	Asian CVAP	Asian CVAP %	Black CVAP	Black CVAP %		
54,639	35,736	65.4%	3,835	7.0%	13,686	25.0%	1,382	2.5%		