



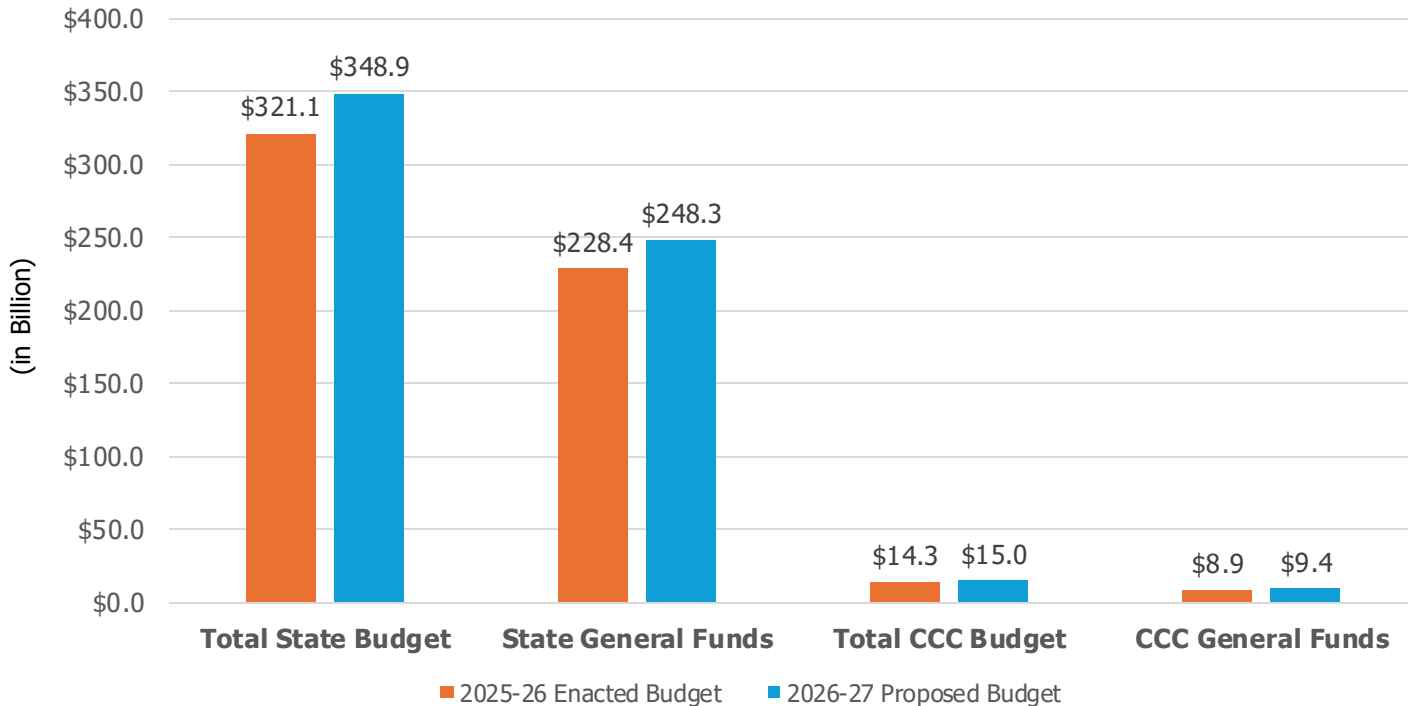
**FOOTHILL-DE ANZA**  
COMMUNITY COLLEGE DISTRICT

# **FY 2026-27 GOVERNOR'S PROPOSED BUDGET**

**DISTRICT BUDGET ADVISORY COMMITTEE**

**January 20, 2026**

# OVER-ALL STATE BUDGET PROPOSAL



- **8.7%** over-all state budget higher than prior year.
- Hinges on higher stock market gains.
- **8.7%** general spending increase from prior year.

- CCC focus is maintaining base funding stability and continued investment in priorities at achieving Vision 2030 and Roadmap goals.
- 2.41% COLA for apportionments and certain categorical programs.
- 1.5% Growth funding (additional 1% in FY 2025-26 and 0.5% in FY 2026-27).
- One-time funding for select initiatives.
- Capital Outlay funds for 39 projects under Proposition 2.

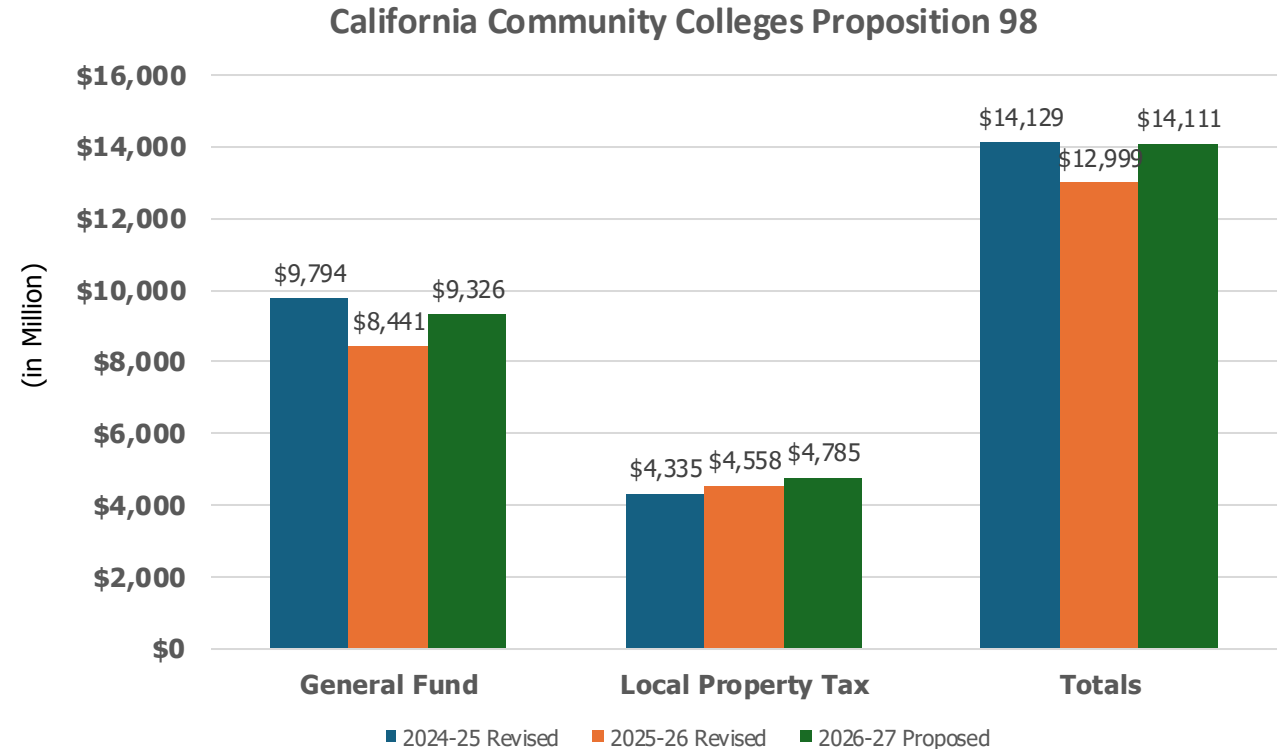
# KEY HIGHLIGHTS OF THE PROPOSED BUDGET

- Proposed Budget reflects a workload budget.
- Projecting a deficit budget for the fourth year.
- Significant reduction in projected deficit from **\$13 billion** down to **\$2.9 billion**.
- Revenues are projected to be higher driven by the enthusiasm on Artificial Intelligence.
- Expenditures are projected to be higher driven by health and human services programs (MediCAL and CalFresh) due to changes in federal policy.



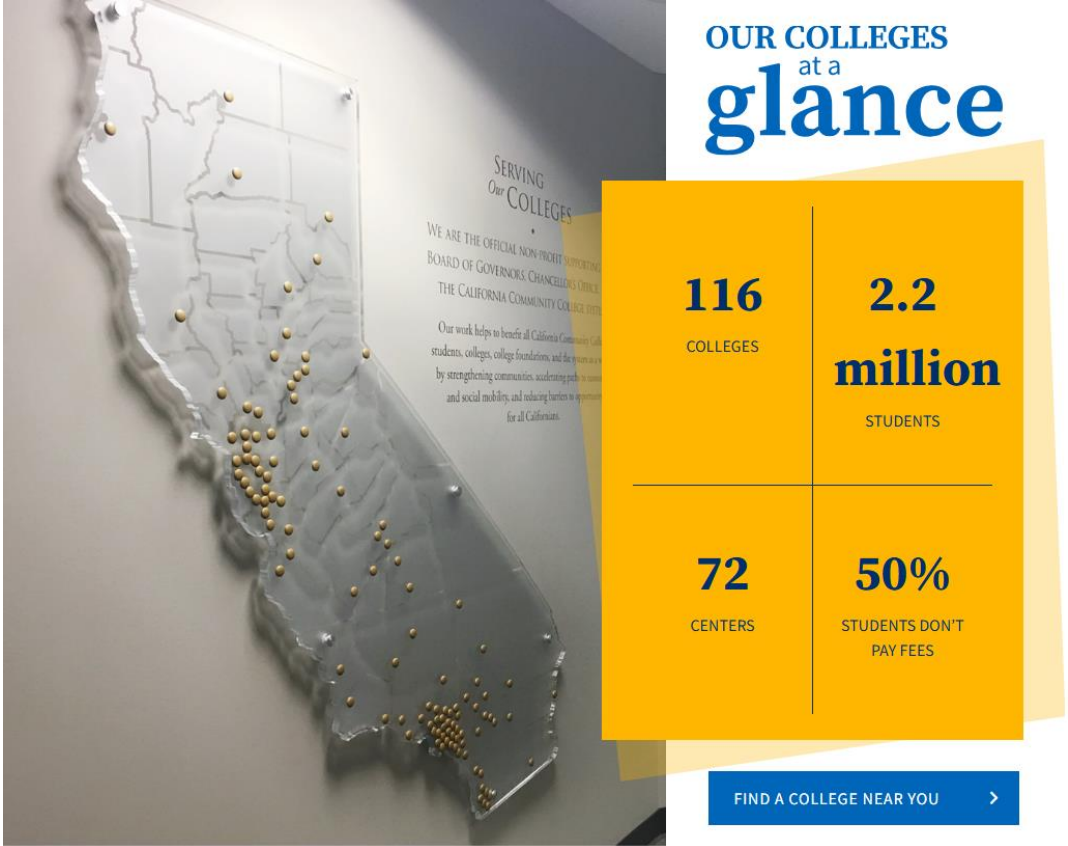
# PROPOSITION 98

- Proposition 98 funds is about 40% of the overall state budget.
- Tension on allocating Prop 98 funds still exist because of how TK Education funding is allocated.
- **10.5%** increase in General Fund, **5.0%** increase in Local Property Taxes.
- **8.6%** total increase in CCC funding.



# STUDENT CENTERED FUNDING FORMULA

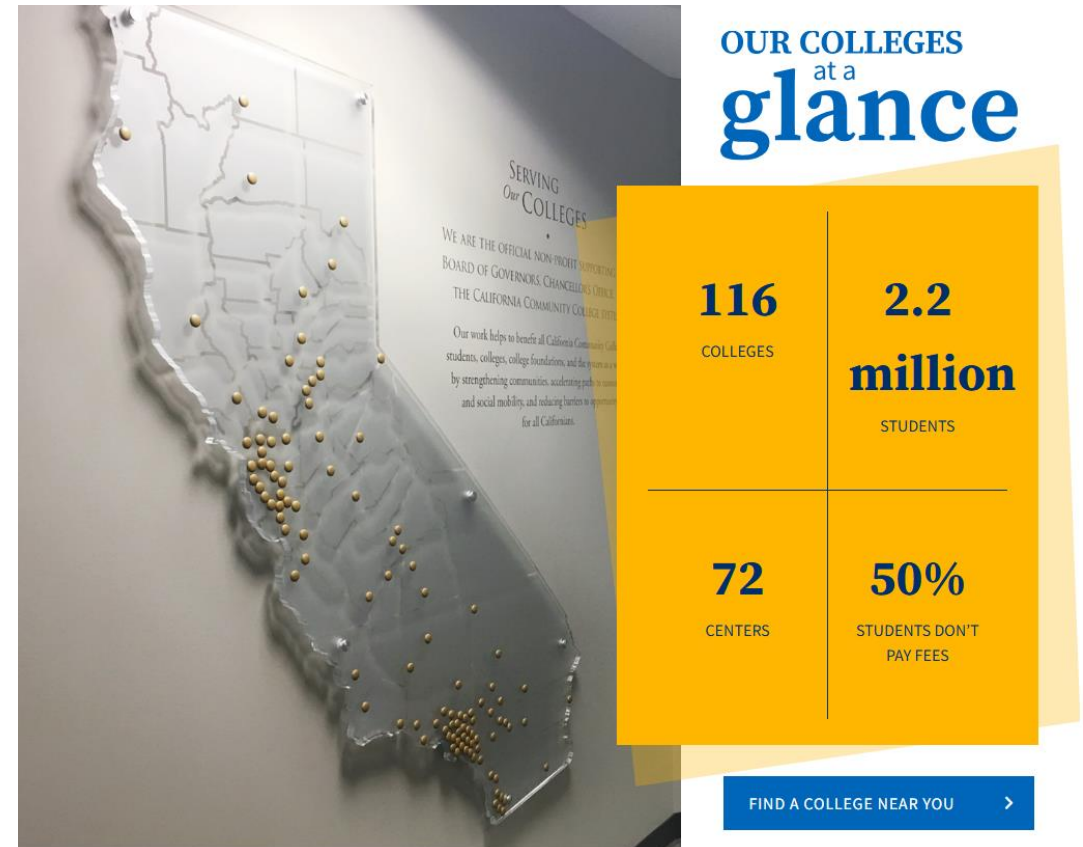
- No changes in the SCFF. Funding floor (aka Minimum Guaranteed Funding) remains in place.
- **2.41%** COLA adjustment in all SCFF metrics (base, supplemental, and success).
- **\$429 million** in ongoing policy adjustments (including COLA and Growth funding).
- Increase support for Calbright College (\$38.1 million ongoing funding).



# PROPOSED ONE-TIME FUNDING

Program	Amount (in million)
Deferral Repayment	\$ 408.4
<b>Deferred Maintenance</b>	<b>\$ 120.7</b>
<b>Student Support Block Grant</b>	<b>\$ 100.0</b>
Cover SCFF shortfall for FT 2025-26	\$ 88.7
Common Cloud Data Platform	\$ 36.0
<b>Credit for Prior Learning</b>	<b>\$ 35.0</b>
<b>Backfill Apprenticeship Funding Shortfall</b>	<b>\$ 13.4</b>

- K-12 proposed budget includes a one-time \$100 million to expand dual enrollment.
- Student Equity and Achievement Program, Strong Workforce Program, and other programs will **NOT** get a COLA adjustment.
- Nursing Infrastructure Grant program **\$60 million** funding will come from Strong Workforce Program.



# PROPOSED ONGOING FUNDING

Program	Amount (in million)	% Increase
SCFF COLA	\$ 240.6	2.41%
SCFF Growth FY 2025-26	\$ 55.3	1.0%
Calbright College	\$ 38.1	
SCFF Growth FY 2026-27	\$ 31.9	0.5%
<b>Adult Education COLA</b>	<b>\$ 16.1</b>	<b>2.41%</b>
Reallocate funds to Basic Needs Centers (from Classified Employee Summer Assistance Program)	\$ 8.0	
Common Cloud Data Platform	\$ 5.0	
<b>Extended Opportunity Programs and Services</b>	<b>\$ 4.6</b>	<b>2.41%</b>
<b>Disabled Student Programs and Services</b>	<b>\$ 4.3</b>	<b>2.41%</b>
Credit for Prior Learning	\$ 2.0	
<b>Mandates Block Grant</b>	<b>\$ 1.6</b>	<b>2.41%</b>
<b>CalWORKS Student Services</b>	<b>\$ 1.4</b>	<b>2.41%</b>

Program	Amount (in million)	% Increase
<b>Financial Aid Administration (adjustments)</b>	<b>\$ 1.2</b>	
<b>Apprenticeship RSI</b>	<b>\$ 0.9</b>	<b>2.41%</b>
<b>Cooperative Agencies Resources for Education</b>	<b>\$ 0.8</b>	<b>2.41%</b>
<b>Equal Employment Opportunity Program</b>	<b>\$ 0.3</b>	
<b>Childcare Tax Bailout</b>	<b>\$ 0.1</b>	<b>2.41%</b>

**I CAN enroll today.**  
Find your passion and go further.  
ENROLL NOW AT [ICANGOTOCOLLEGE.COM](https://icangotocollege.com)

California Community Colleges



**FOOTHILL-DE ANZA**  
COMMUNITY COLLEGE DISTRICT

**THANK YOU!**